

HA Covenant 30K



ASA# 4040505 • PB SM • Homozygous Black • Homozygous Polled

Bridle Bit Eclipse E744
Sire: Hook's Galileo 210G
Hook's Evita 18E

GW-WBF Substance 820Y
Dam: Hook's Ceres 11C
Hook's Sarita 92Y

Trait	CE	BW	WW	YW	ADG	DMI	\$Gain	MCE	Milk	MWW	Stay	DOC	CW	YG	Marb	Fat	REA	Shr	API	TI
EPD	13.2	2	95	154	.37	1.36	.07	8.1	26.3	73.7	21	16.6	56.5	-.31	.81	-.06	1.07	-.54	188.6	106.4
ACC	.64	.72	.71	.68	.68	.37	.38	.35	.23	.36	.38	.65	.54	.40	.46	.42	.48	.07		
%	30	65	10	4	3	99	20	20	25	10	5	10	2	75	2	65	15	1	1	2

EPD as of 2.28.25



Dan Leo
1146 7th Avenue
Dannebrog, NE 68831
308-750-0200

Simmental

- From his initial calf crop, sons were featured highlights in the Lassie, APEX and Barker sales. Daughters are most impressive with their extra volume, performance, and eye appeal.
- He is the 'true standout' Galileo son in terms of phenotype, balance, and his impressive genomic data!
- Great dispositioned, excellent feet and legs, deep-ribbed and powered up with impressive natural thickness.
- For extra eye appeal, impressive quality, sound structure, gentle dispositions, and valuable performance, he excels in all.
- Use the Planned Mating calculator to see the kind of EPD and Indexes projected utilizing him this year! The resulting data will be impacting, ahead of most any purebred sire in the breed.
- For correct-structured, great-footed, docile calves that have that extra volume, fleshing ability and eye appeal, make sure you order plenty of his semen.
- His extraordinary dam is now a lead donor at Running Springs Cattle program.

Semen: \$30/unit

Semen available from Allied Genetic Resources, Cattle Visions, and APEX Cattle.



HA Justice 30J



ASA# 3918028 • PB SM • Homozygous Black • Homozygous Polled

Bridle Bit Eclipse E744
Sire: Hook's Galileo 210G
Hook's Evita 18E

Hooks Shear Force 38K
Dam: Hook's Dacia 14D
Hooks Ariana 58A

Trait	CE	BW	WW	YW	ADG	DMI	\$Gain	MCE	Milk	MWW	Stay	DOC	CW	YG	Marb	Fat	REA	Shr	API	TI
EPD	13.4	.9	97.6	160	.39	1.7	.04	8.7	32.4	81.2	19.2	17.1	55.7	-.37	1.08	-.064	1.24	-.45	203.8	117.1
ACC	.71	.86	.82	.81	.81	.38	.41	.37	.28	.40	.42	.72	.68	.52	.66	.58	.64	.08		
%	30	45	5	2	2	99	50	15	5	1	15	4	2	55	1	65	3	5	1	1

EPD as of 2.19.25



Van Slyke, Matt
7509 Nolensville Road
Nolensville, TN 37135
Matt 615-417-6035



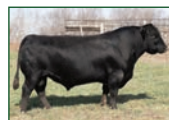
Lucas and Randy Anderson
27458 Co. Rd. 13 • Starbuck, MN
Lucas 320-424-3010
Randy 320-805-0188
www.highlandacrescattle.com



Marty Ropp
406-581-7835

Simmental

- Justice has proven his worth in the industry by siring top-selling bulls across the country, and his young first-calf daughters are showing high levels of productivity.
- His now proven EPD profile exhibits value added traits across the board, with strong growth, top ranking marbling, ribeye area, and carcass weight, along with high-end maternal values.
- A rare combination of breed-leading Indexes, a balanced EPD profile, and phenotype performance in a smooth-made pure-bred package.
- Justice's Tom Hook bred dam excels in hoof and udder quality, along with excellent carcass spread, and docility.
- A RightScore 5 and G+ badge further support Justice's superior genetic potential, making him a must-use bull.



Sire: Hook's Galileo 210G



CLRS Mutual Fund 246M \$21,000 son sold on the Bred for Balance Sale



TJ 504M \$60,000 high seller on the Triangle J Sale

Semen: \$30/unit

Semen available through owners or Allied: Sexed heifer semen available through owners.

